

## Lesson 3

# Telling the Time

### In Focus

Charles leaves school at 1:30 p.m.  
Can you tell the time in other ways?



### Let's Learn

1



It is 1:30 p.m.  
It is 1:30 in the afternoon.



2



It is half past one in the afternoon.

3



It is 30 minutes past one in the afternoon.

4

Charles arrives in school at



every school day.



8:25 a.m.



8:25 in the morning.



25 minutes past 8 in the morning.

Next

## Guided Practice

1 Tell the time in as many ways as you can.

(a)



morning

(b)



afternoon

(c)



night

2



It is  minutes past  in the morning.

Tell the time in another way.

3



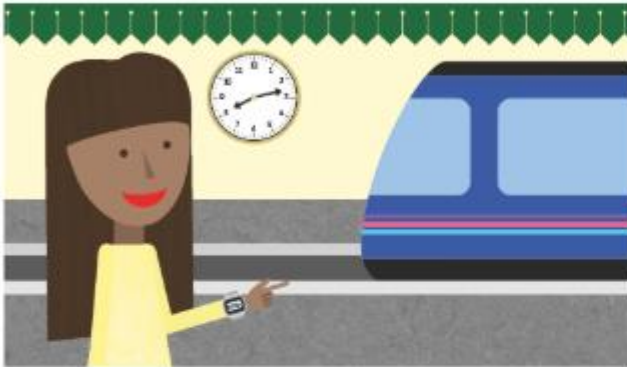
It is  to  in the afternoon.

Write down the time using a.m. or p.m.

# Telling the Time

## Lesson 4

### In Focus



At what time did the train arrive?



The watch  
is not showing the  
correct time.



The clock is showing  
the correct time.



### Let's Learn

1



It shows 8 o'clock at night.  
We write it as 8:00 p.m.

2



It shows 13 minutes past 8 at night.  
We write it as 8:13 p.m.

The train arrived at 8:13 p.m.

## Guided Practice

Match the clocks that show the same time.



•



•



•



•



•

07:15<sub>AM</sub>

•

08:09<sub>AM</sub>

•

10:30<sub>AM</sub>

•

03:17<sub>PM</sub>

•

10:00<sub>PM</sub>

•



The time is  minutes  
past .

Can you suggest something  
that might happen at each of  
these times?

